



European  
Commission

# The European Innovation Partnership on **Smart Cities and Communities**

**Jens Bartholmes**  
(European Commission, DG Energy)

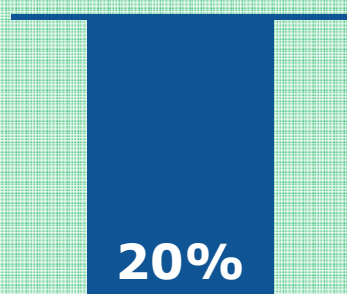
27/05/2015, Lisbon



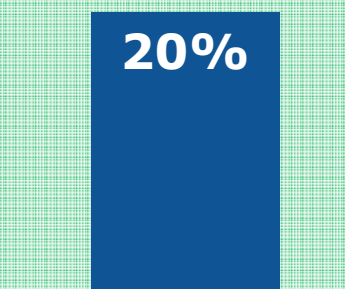
# What about the 20-20-20 targets?



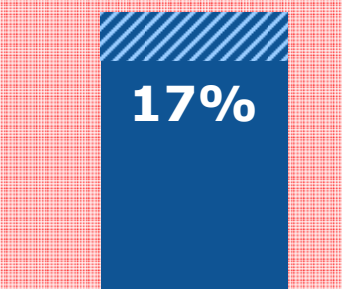
**Reduce  
greenhouse gas  
emissions by  
20%**



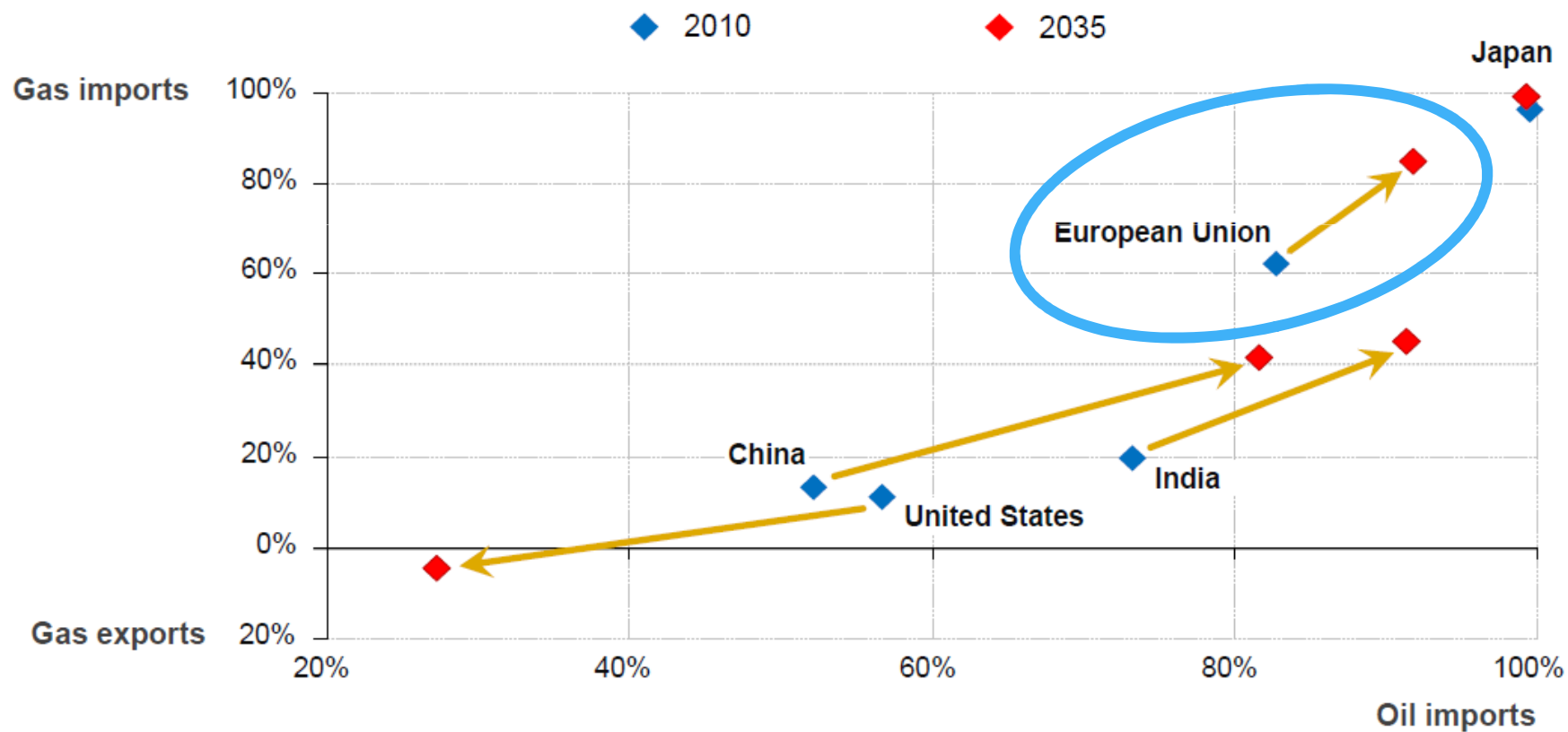
**Increase share  
of renewable  
energy to 20%**



**Increase energy  
efficiency by  
20%**



# Dependance on energy imports



## Energy Efficiency Target

**415** mio  
tons of oil

which the  
EU does not  
have to  
import on a  
yearly base

≈

**193** €bn

annual  
savings  
based on  
conservative  
estimate of  
73€/barrel

≈

**1000**

coal  
power  
plants less

or 500.000  
wind power  
plants less

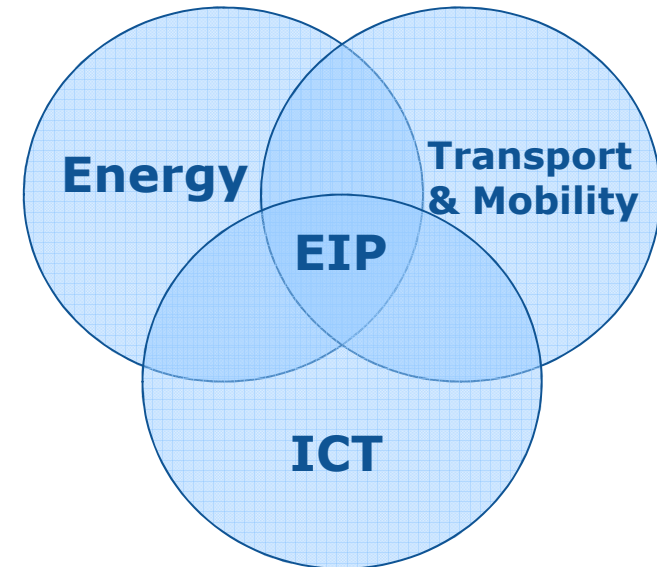
≈

**GDP of  
Finland**

(2012)

## Smart Cities EIP

- **Integrated approach**
  - Energy, Transport and ICT
  - ICT as enabler and consumer
- Focus on **intersection**
- Key role for **industries and cities**
- Governance structure (Top down – bottom up)





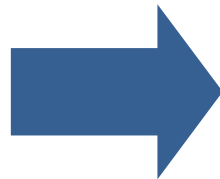
## Smart Cities EIP 'Philosophy'

- Tackle **common challenges** & bottlenecks
  - Develop **innovative & replicable** solutions
  - **Bundle** demand from cities and regions
  - Attract and **involve business and banks**
- ➔ **Create markets!**



## Invitation for Commitments

- Distinct and independent from Horizon 2020
- **370 eligible commitments**
- bringing together **more than 4000 partners** from **31 countries**.



**Online Market Place**  
<http://eu-smartcities.eu>





# THE ACTION CLUSTERS







PAST

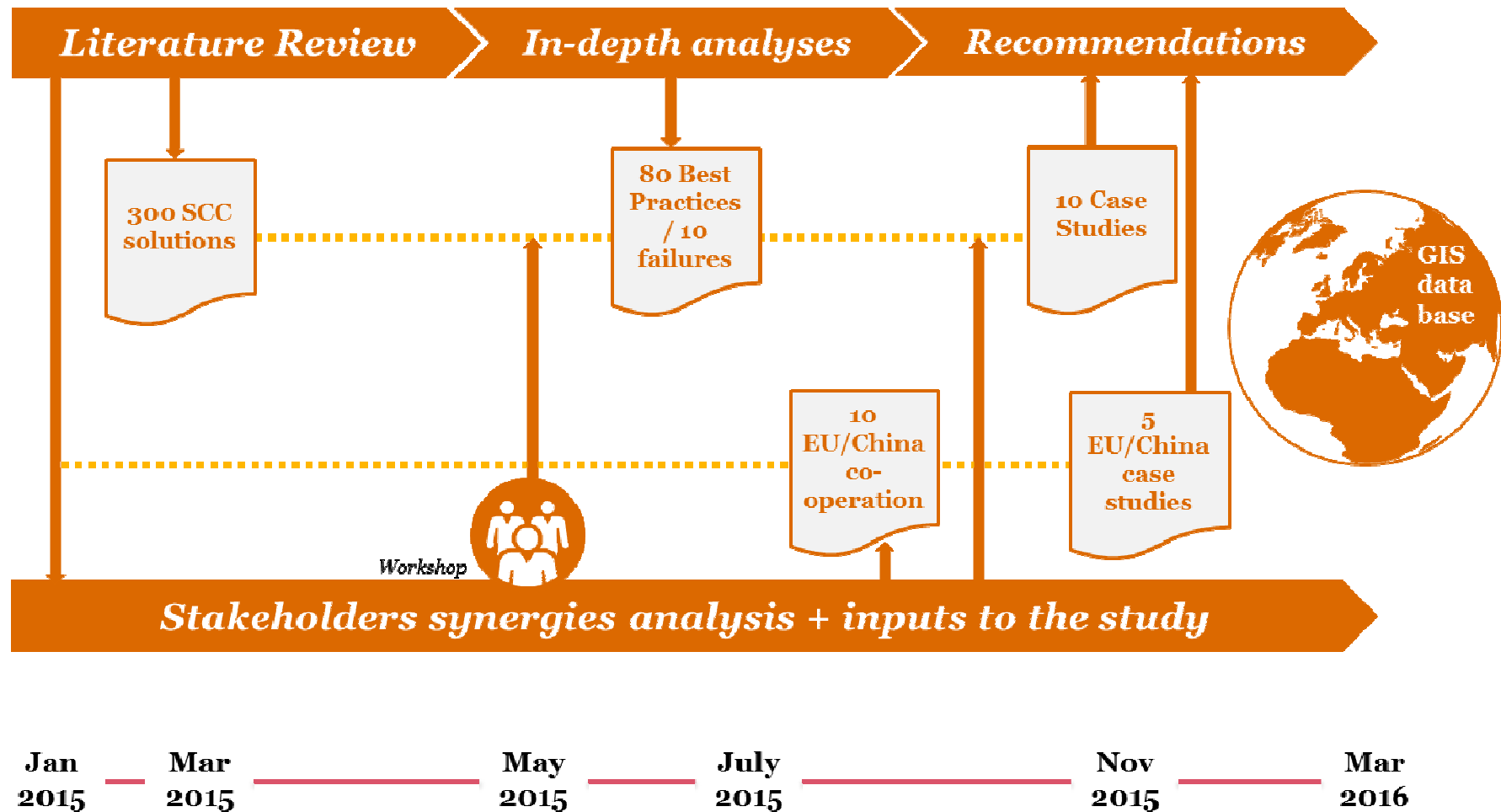
FUTURE





# Analysing the potential for wide scale roll out of integrated Smart Cities and Communities (SCC) solutions

- **Best practice** examples in Europe/worldwide;
- European SCC solutions' **replication potential**
- **Synergies** between SCC actors;
- Map and **visualize** the European SCC landscape (**GIS** model).



# Strategic Implementation Plan Priorities



## *Technology dimension*

- Sustainable urban mobility
- Sustainable Districts and Built Environment
- Integrated infrastructure and processes



## *Human dimension*

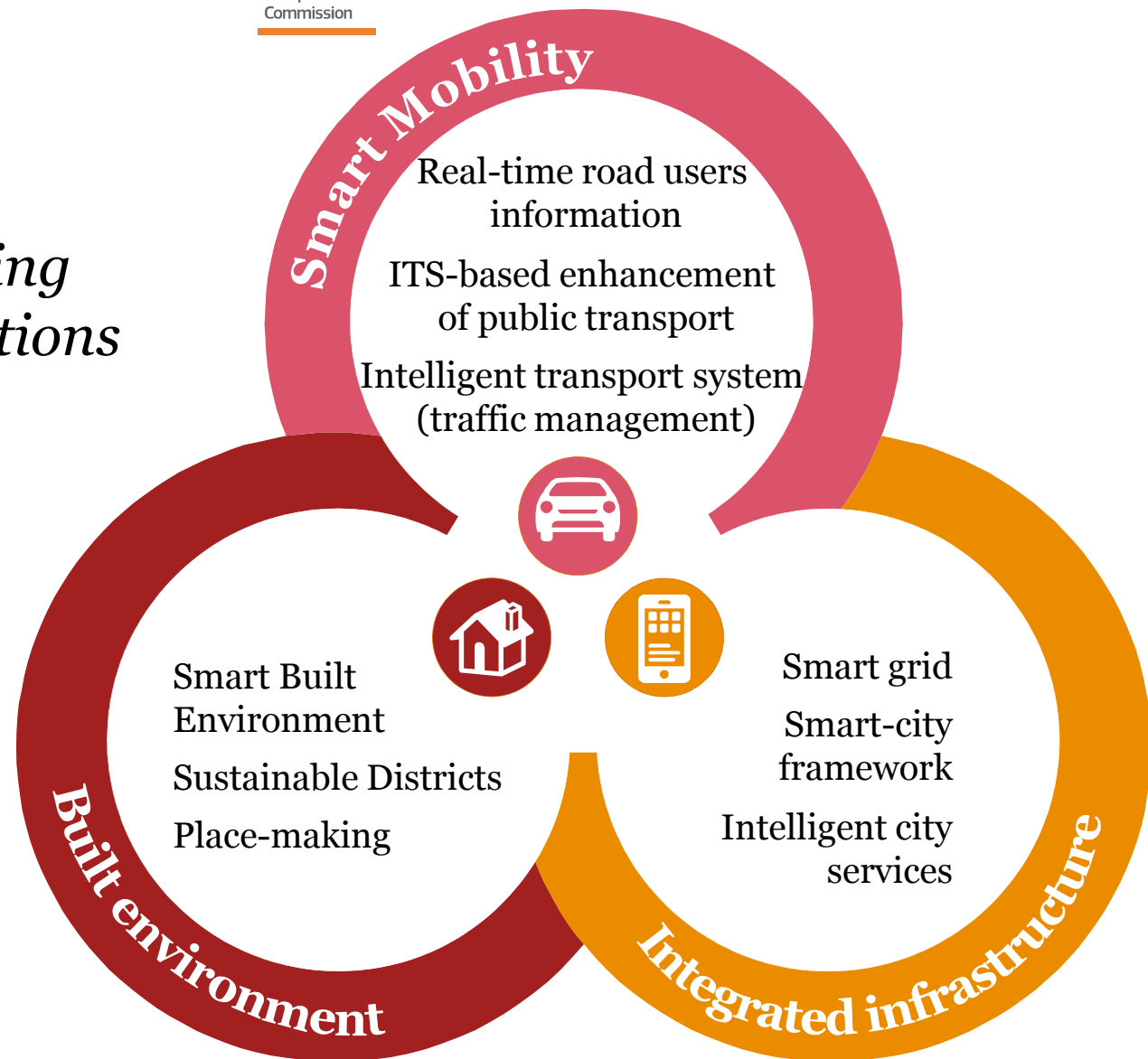
- Citizen focus
- Knowledge Sharing
- Open Data



## *Institutional (and managerial) dimension*

- Policy and Regulation
- Integrated strategy, planning and management
- Baselines, Performance Indicators and Metrics
- Standards
- Business Models, Procurement and Funding

## *Wide-scale mapping of integrated solutions*









# The European Innovation Partnership on **Smart Cities and Communities**

<http://ec.europa.eu/eip/smartcities>

<http://eu-smartcities.eu>

[EC-SMARTCITIES@ec.europa.eu](mailto:EC-SMARTCITIES@ec.europa.eu)







European  
Commission



European  
Commission



## Commitments



- **60-90 million streetlights** across Europe
  - 75% > 25yrs old
  - consuming 20-50% of a city's energy bill.

**€1.9billion/year energy cost saving** could be made through use of modern lamps !

- EIP commitment received : “**10 Million Smart Lampposts**” in cities across Europe.
  - backed by 25 organisations from 7 countries; with a further 20 commitment leads eager to engage – some 300 organisations and growing



## H2020 - Lighthouse projects

Low energy districts  
Integrated infrastructures  
Sustainable urban mobility

- Consortia: industry & cities
- 2-3 cities involving, 2-3 follower cities
- Part of ambitious urban plan
- Funding from other parts secured
- Affordable solutions

